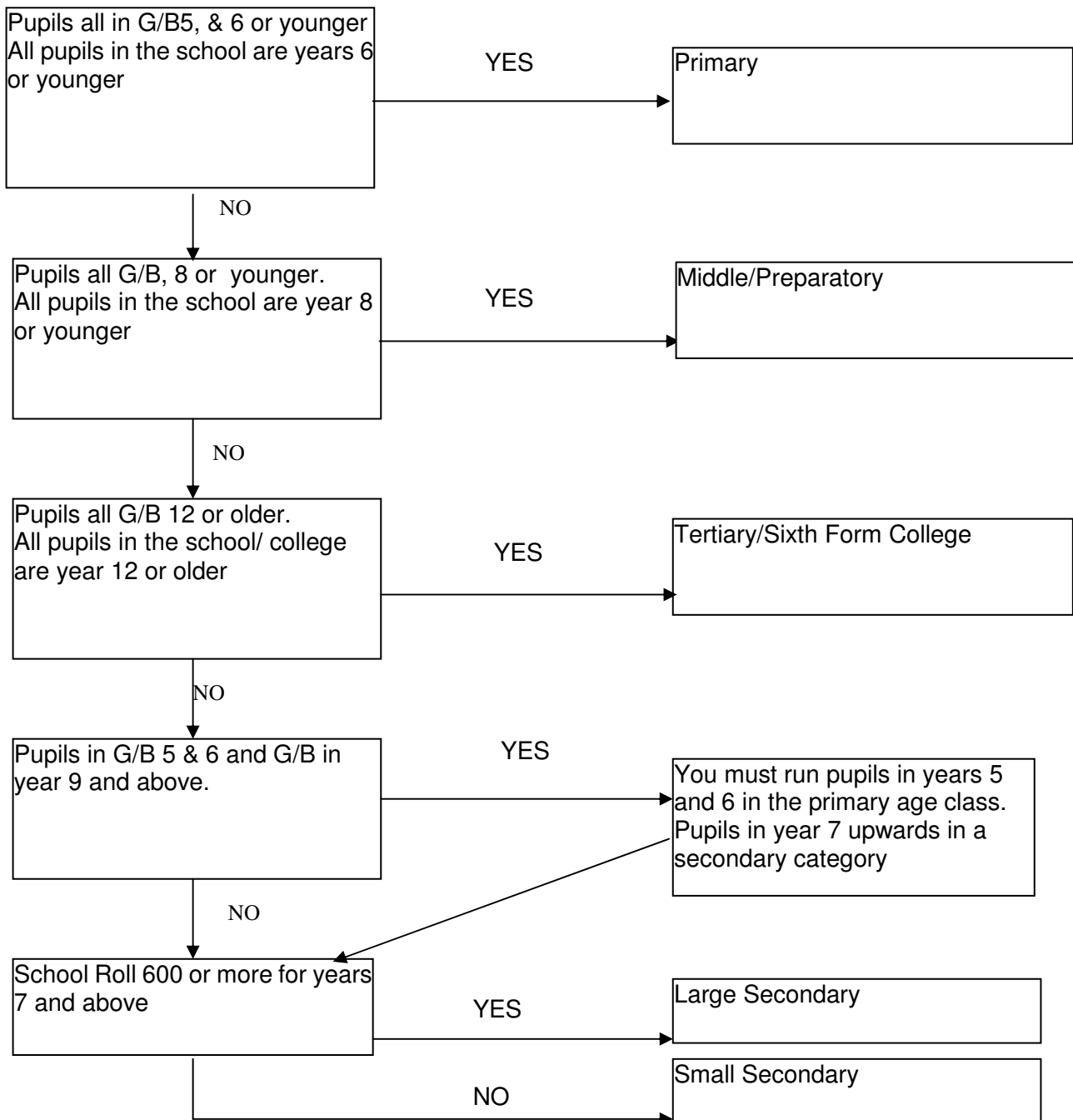


British Schools Orienteering Championship Flow Chart – School Categories

The following refers to pupils on the school roll, not just those entered for the event. Year groups refer to the normal d.o.b. ranges in English schools so any school which doesn't conform to those year groups should match their age range to the corresponding classes on the entry forms and then refer to the chart below. Therefore, for example, Scottish primary schools would normally fit into the Middle School age range. See also the notes below the chart. Schools should enter the "Whole School Team" as follows:-



Where a School or College does not conform to the guide above, then the school should enter the "Whole School Team" competition in a category appropriate to the general classification of the school, and in the spirit of the competition.

In the event of any uncertainty as to which "Whole School Team" category to enter, please contact the Organiser, who will attempt to resolve the matter. If a school and the organiser cannot agree on the correct category to enter, then the matter will be referred to the British Schools Orienteering Association whose decision is final.

NB A school may only enter TWO "Whole School Team" Categories if they have pupils in years 5 or 6 AND years 9 or above.